

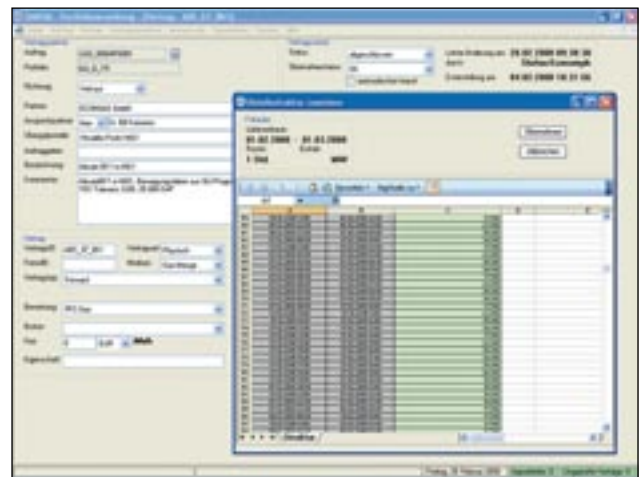
## BALANCE PROCESS MANAGEMENT

### Balance Process Management

The scope of the balance process includes tasks associated with prediction & portfolio management. Outlined below are the main focus points within this comprehensive workflow process for Gas/ Electricity traders and suppliers:

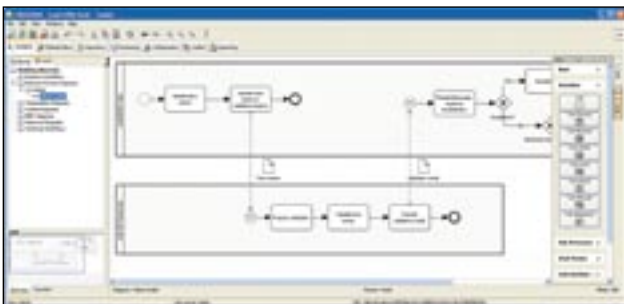
- management of the business partners and business contracts
- management of all other validation data
- technical and logical plausibility checks of measuring data and contract data
- balances according to dynamically fixable criteria
- nomination / renomination according to generic rules

The inubit BPM-Suite combined with modules of the HAKOM Framework allows for comprehensive and universal support of the process steps within the BPM workflow.



### Definition of workflows and processes

The inubit BPM-Suite allows the graphical modelling of the whole process life cycle for validating dates of receipt up to the dispatch of the schedules.



### Management of your business partners and contracts

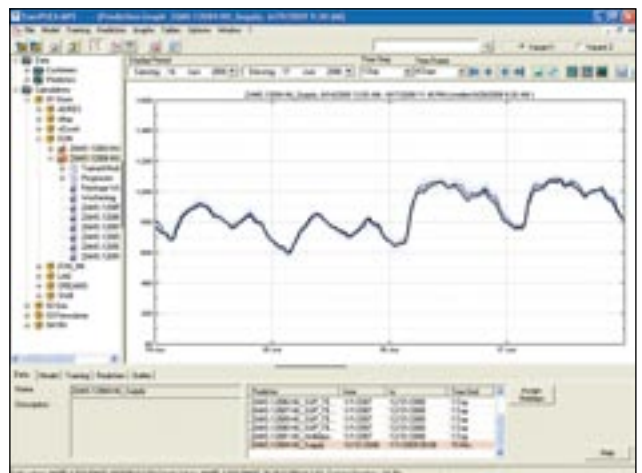
HAKOM PVS manages all contracts for the nomination and balance specific rules and regulations.

### Easy production and automation of forecasts

Provide accurate predictions for power consumption and gas consumption in mpE – Meta Predictor Energy.

The multivariate regression procedure incorporates three important criteria for successful results in your predictions:

- Usability
- Calculated speed
- Prediction accuracy



## BALANCE PROCESS MANAGEMENT



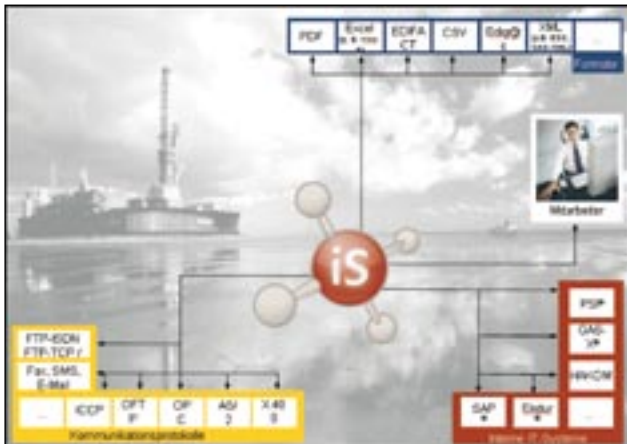
### Adaptable definition of time series based rules

The Excel-Template concept completely integrated into the inubit BPM-Suite of the ZRM allows the free definition of rules for the following processes:

- Validation of receipt dates for (external forecasts, meteorological measuring data and predictions, contract registrations)
- Balance of your relation contracts and supply agreements
- Nomination and renomination of the contracts
- Central monitoring of schedule statistics

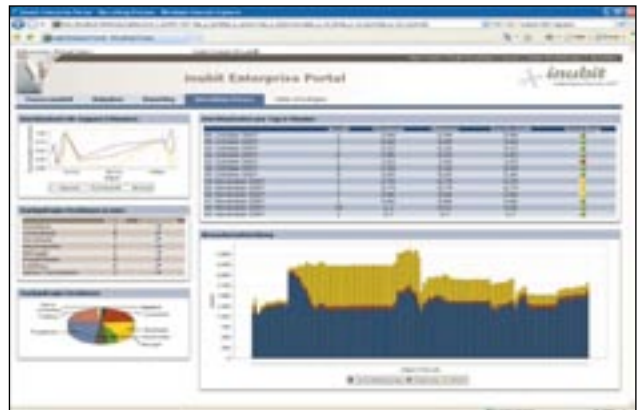
### Automated Data Exchange

The communication component of the inubit BPM-Suite supports all data formats and data delivery protocols for the electronic data exchange with partners in the energy market. Checks also include validation of plausibility based on market rules and feedback of partners.



### Central Monitoring of the whole status

On the inubit Enterprise Portal main page is an online display of the data exchange with all partners. This status page provides details of the validity checks and results of the scheduling process.



### Integration in the overall system

On the basis of standard connectors offshore and post stored systems can be simply integrated without any specific programming necessities into the whole process.

### Experienced manufacturers

HAKOM has many years of practical experience in the field of energy data management. The HAKOM Frameworks modules have been in use since the liberalisation of the energy market in 2001.

HAKOM products are currently in production at a number of renowned European energy supply enterprises. Our partner inubit AG has many years of successful implementation of its integrated workflow and communication applications in Europe. More than 150 companies in the energy market are already using the inubit BPM-Suite for process automation.