

mPE - Forecasting System



mPE - Forecasting System

Energy consumption forecasts

mPE (Meta Predictor Energy) is a forecasting tool which has established itself as a universal solution for precise energy consumption prognoses in recent years.

Five main criteria, which are ideally merged in mPE, are responsible for this performance:

- Usability
- Run-time performance
- Forecasting precision
- Scalability
- Versatility

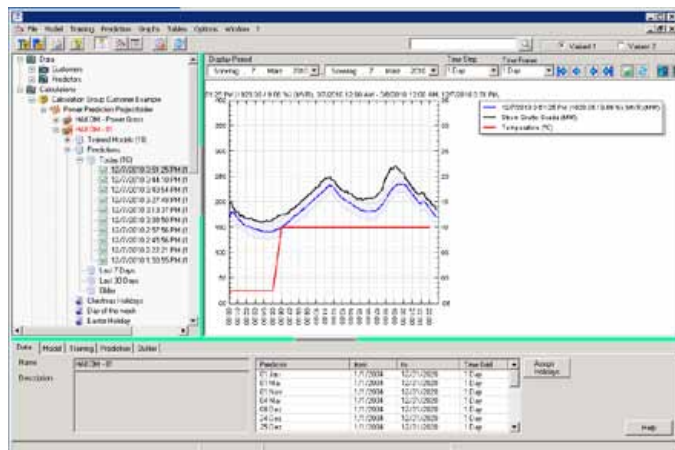
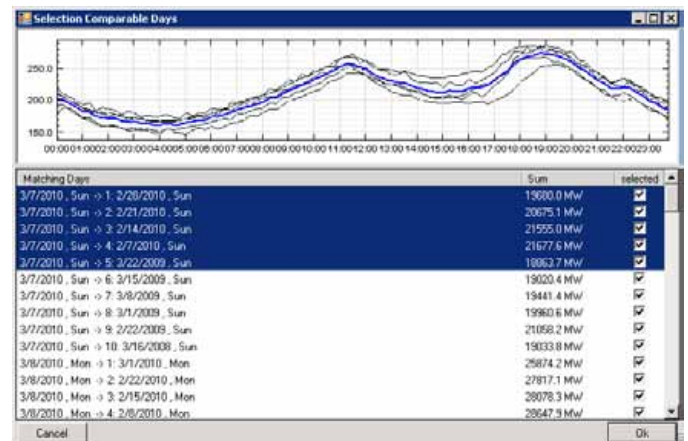


Comparison Days procedure

The comparison days procedure compares and detects days with the same characteristics and a similar pattern.

Key benefits

- More accurate forecasting by including comparison days
- Better prediction of days with the same consumption patterns
- Good reproducibility of results
- An attractive alternative to complex mathematical approaches



Innovative procedure

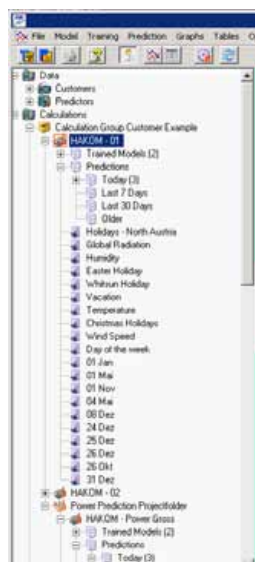
There are currently three different prediction methods available for the delivery of excellent forecasts:

Multivariate regression procedure

With the help of multivariate regression procedures, even complex influences of different meteorological and social factors are mapped very accurately. There is no explicit knowledge of the functional relationship between predictors and target required.

Key benefits

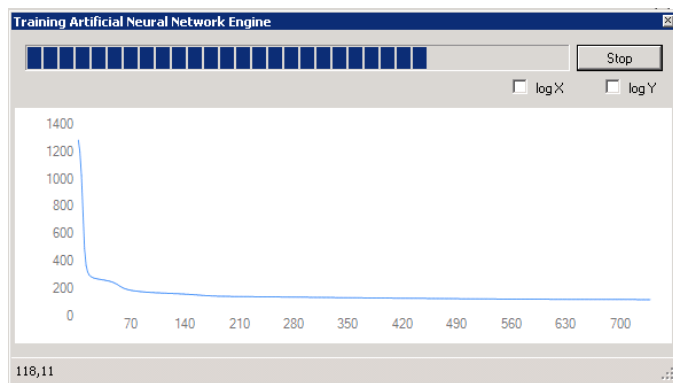
- Good account of nonlinear effects
- Extremely short processing times
- Simple modelling



mPE - Forecasting System

Key benefits:

- Better consideration of the interaction of all factors
- Better results on special days like holidays
- Very fast training times through optimal implementation
- Simple modeling



Quick model development

Within the shortest possible time mPE can be adjusted to any consumption structure. The generation of the model is simple with a graphical user interface, the factors influencing the model are neither limited in number nor in combination possibilities. The handling of the software is carried out by familiar Windows 'drag&drop' functions. Special mathematical expertise is not necessary.

Multi usage application

Cycle and trend values can be integrated, including very precise long term forecasting. Statistical analysis using "Multivariate Data Analysis" is included.

mPE is scalable and open. Data management takes place on a central data base server; processing is done either on the client computer or – in case of automatic tasks – on the server.

Full integration in the HAKOM Framework

mPE is available as a fully integrated tool in the HAKOM Framework. For pre- and post processes for meter data and supply management the HAKOM Time Series Manager is available.

Successful solution packages

EnerPULS mPE, which consists of HAKOM Time series manager and mPE has proved highly successful with numerous Austrian and German customers in the electricity and gas markets.

The combination of both HAKOM and the Munich metalogic AG combines process know-how and long-term experience in the energy market with excellent competence in the field of mathematical procedure development.

mPE is also available as an integral part of the products of Robotron GmbH in Dresden.

Scalability

mP Energy offers numerous opportunities for scaling:

mP Energy Windows Clients

You can use the system simultaneously on multiple workstations to share the modeling work.

Prediction Automation Server

Use several Prediction Automation server to reduce the computing time for various tasks such as data update, forecasting and service to distribute the results.

WEB Service Queue Manager

You can use WEB Service Queue Manager to accept orders from external systems and forward them to the Prediction Automation Server by using Web Service technology.

